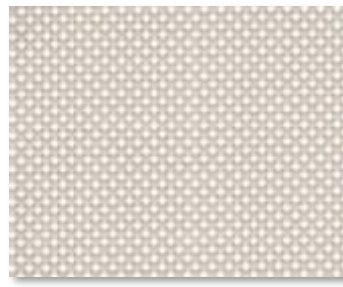


## Solo Screen 5%



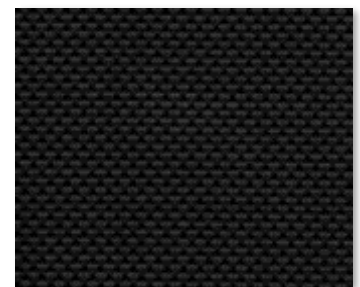
WHITE



WHITE/ BEIGE



BEIGE



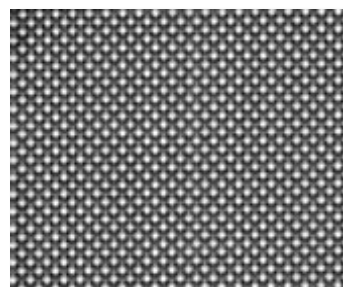
BLACK



WHITE/ GREY



ASH



BLACK/ PEWTER



BRONZE/ BLACK

## SPECIFICATION

**WIDTHS** 98" and 118"

**ROLL LENGTH** 32.8 Linear Yards

**FABRIC WEIGHT** 12.39 oz/yd<sup>2</sup>
**FABRIC THICKNESS** 0.023 in.

**OPENNESS** ~5%

**UV BLOCKAGE** ~95%

**COMPOSITION** 30% Polyester, 70% PVC

**PRINTABLE** Yes

**WARRANTY** 25 Years

**FIRE CLASSIFICATION** NFPA 701 TM#1 (small scale) TM#2 (large scale)

NFPA 101 (Class A Rating)

California U.S. Title 19 (small scale)



## Care & Handling

Remove dust with vacuum cleaner or compressed air. Do not scrub. Do not use solvents or any abrasive substance which might damage the coating of the fabric. Clean with a sponge or a soft brush dipped in soapy water using mild detergent. Rinse with clean water. Leave the blind down until completely dry. You can also very gently rub the fabric with a clean white pencil eraser to remove small stains.