

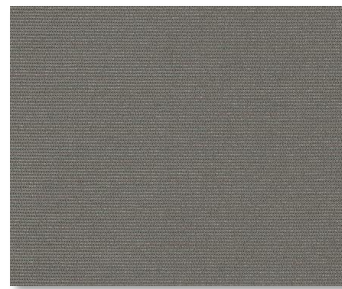
Vizela



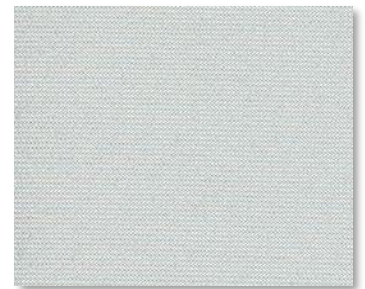
618 MISSISSIPPI



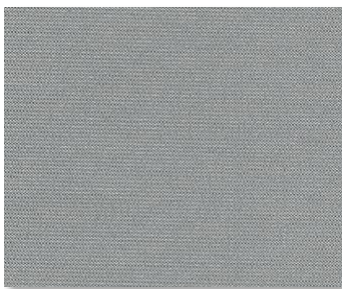
623 SAHEL



609 LOUTRE



600 BLANC



608 CHARTREUX

SPECIFICATION

WIDTHS 94.5"

ROLL LENGTH 36 Linear Yards

FABRIC WEIGHT 8.7 oz/yd²
FABRIC THICKNESS 0.013 in.

OPENNESS ~1%

UV BLOCKAGE ~99%

COMPOSITION 100% Fiberglass/ EVA Coating

WARRANTY 10-Years Interior

FIRE CLASSIFICATION

**BACTERIAL AND
RESISTANCE
ACOUSTICAL
PERFORMANCE
ENVIRONMENTAL
BENEFITS**

NFPA 701-10 TM#1, California U.S. Title 19
CAN/ULC-S109-03 Small & Large Flame Test

ASTM E2180, ASTM G21

NRC: 0.35, SAA:0.33

RoHS-LeadFree



Care & Handling

Remove dust with vacuum cleaner or compressed air. Do not scrub. Do not use solvents or any abrasive substance which might damage the coating of the fabric. Clean with a sponge or a soft brush dipped in soapy water using mild detergent. Rinse with clean water. Leave the blind down until completely dry. You can also very gently rub the fabric with a clean white pencil eraser to remove small stains.