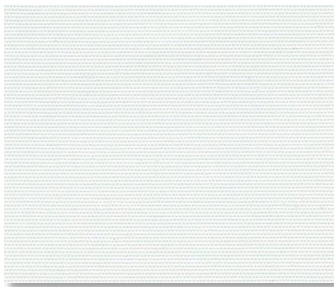
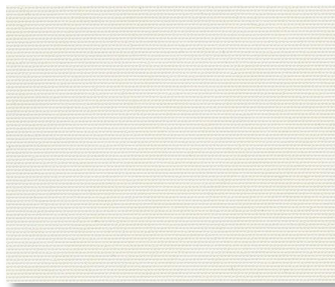
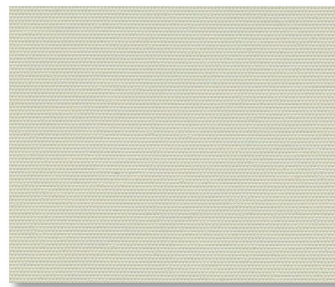


**SHEERWEAVE | 7500 BLACKOUT**

R13 ICE



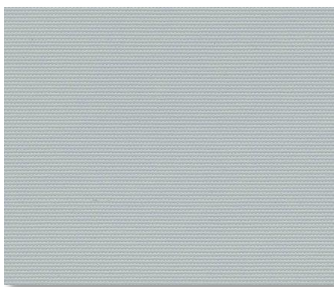
R39 CLOUD



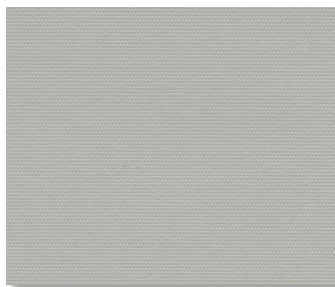
R40 PORCELAIN



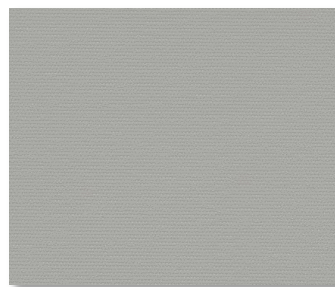
R41 LIMESTONE



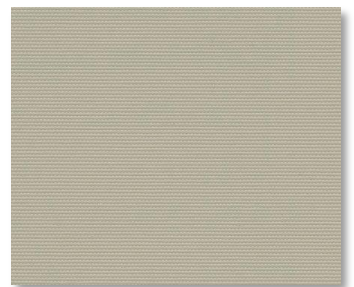
R97 MIST



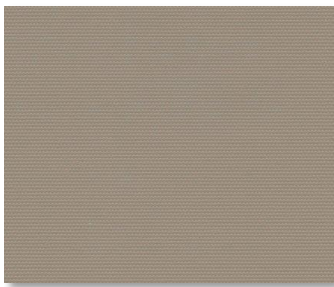
R42 NIMBUS



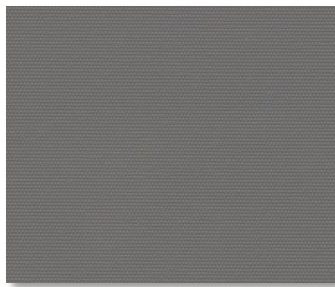
R43 TUNDRA



R17 DUNE



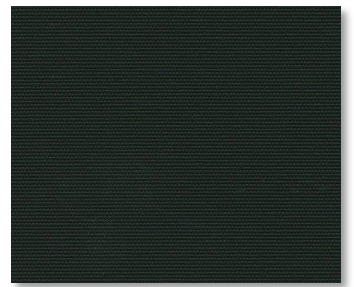
R19 STONE



R20 ODYSSEY



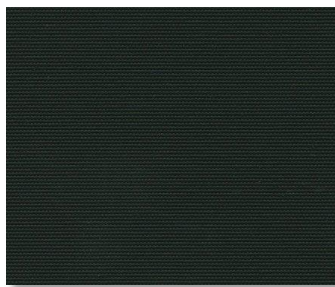
R21 ORIENT



R22 MIDNIGHT



S97 ORIENT X2



R99 MIDNIGHT X2

**Care & Handling**

Remove dust with vacuum cleaner or compressed air. Do not scrub. Do not use solvents or any abrasive substance which might damage the coating of the fabric. Clean with a sponge or a soft brush dipped in soapy water using mild detergent. Rinse with clean water. Leave the blind down until completely dry. You can also very gently rub the fabric with a clean white pencil eraser to remove small stains.

**SPECIFICATION**

---

**WIDTHS** 118"**ROLL LENGTH** 30 Linear Yards**FABRIC WEIGHT** 12.14 oz/yd<sup>2</sup>**FABRIC THICKNESS** 0.016 in.**OPENNESS** Opaque**COMPOSITION** 100% Polyester with Acrylic Coating**WARRANTY** 5- Years Interior**BACTERIAL AND  
RESISTANCE  
ACOUSTICAL  
PERFORMANCE  
ENVIRONMENTAL  
BENEFITS  
FIRE CLASSIFICATION**

ASTM G21, AATCC 174-1998 Part II and III

NRC 0.00 / SAA 0.03

Certified to GREENGUARD

Style 7500: California U.S. Title 19 (small scale), NFPA 101 (Class A Rating), NFPA 701 TM#1 (small scale), BS 5867 Part 2 Type B Performance, CAN/ULC-S 109 (large and small scale), IBC Section 803.1.1 (Class A Rating), CAN/CGSB 2-4.162-M80

**Care & Handling**

Remove dust with vacuum cleaner or compressed air. Do not scrub. Do not use solvents or any abrasive substance which might damage the coating of the fabric. Clean with a sponge or a soft brush dipped in soapy water using mild detergent. Rinse with clean water. Leave the blind down until completely dry. You can also very gently rub the fabric with a clean white pencil eraser to remove small stains.