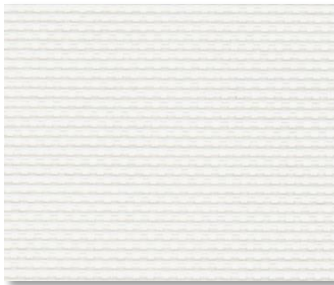
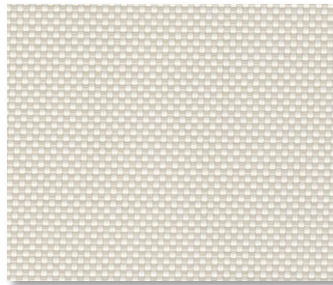


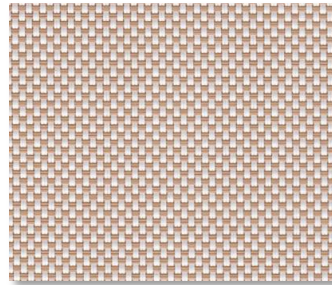
Infinity2 5%



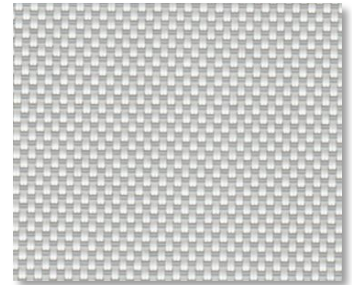
PG1 COTTON



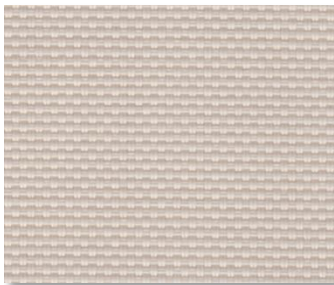
PG2 ALMOND



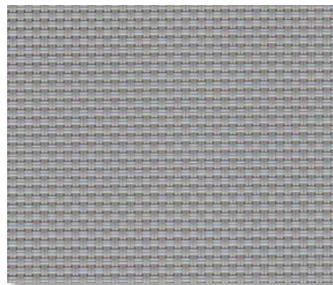
PG3 WHEAT



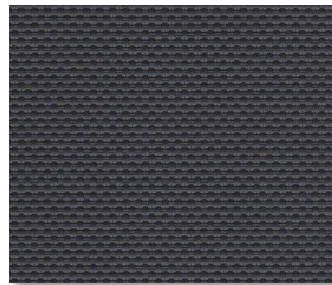
PG4 STONE



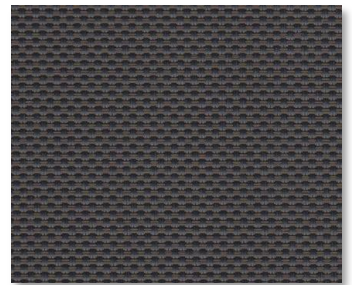
QG1 BARLEY



VG1 NICKEL



VG2 MIDNIGHT



VG3 BARK



VG4 SLATE

SPECIFICATION

WIDTHS 63" and 98"

ROLL LENGTH 30 Linear Yards

FABRIC WEIGHT 12.82 oz/yd²
FABRIC THICKNESS 0.030 in.

OPENNESS ~5%

UV BLOCKAGE ~95%

COMPOSITION 100% Thermoplastic Olefin, 20% TPO Fiber
Yarn/80% TPO Coating on TPO Yarn

WARRANTY 5-Years Interior

**BACTERIAL AND
RESISTANCE**

ASTM E 2180, ASTM G21

**ACOUSTICAL
PERFORMANCE
ENVIRONMENTAL
BENEFITS**

NRC 0.10 / SAA 0.11

FIRE CLASSIFICATION

Certified to GREENGUARD and GREENGUARD
Gold
NFPA 701 TM#1 (small scale), NFPA 101 (Class A
Rating), CAN/ULC-S 109 (large scale), IBC Section
803.1.1 (Class A Rating), BS 5867 Part 2 Type B
Performance, CAN/CGSB 2-4.162-M80


Care & Handling

Remove dust with vacuum cleaner or compressed air. Do not scrub. Do not use solvents or any abrasive substance which might damage the coating of the fabric. Clean with a sponge or a soft brush dipped in soapy water using mild detergent. Rinse with clean water. Leave the blind down until completely dry. You can also very gently rub the fabric with a clean white pencil eraser to remove small stains.