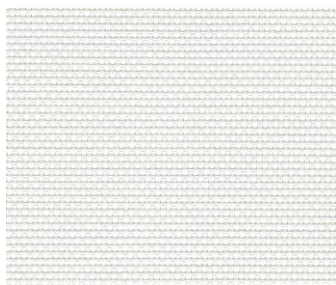


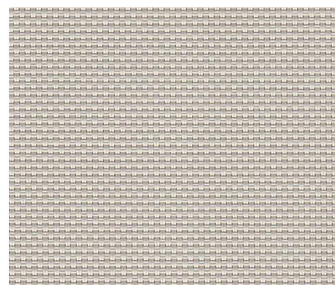
## SHEERWEAVE | 4001 1%



U58 ECO/ CHALK



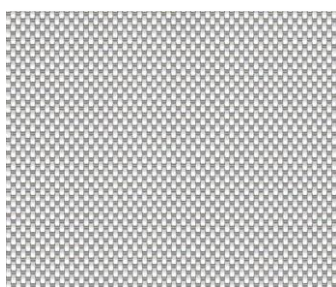
U59 ECO/ ALABASTER



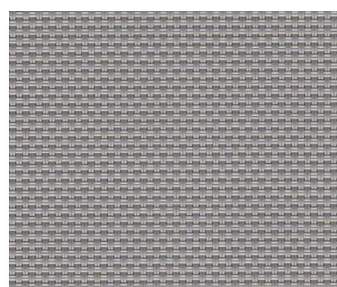
U60 ECO/ PEBBLESTONE



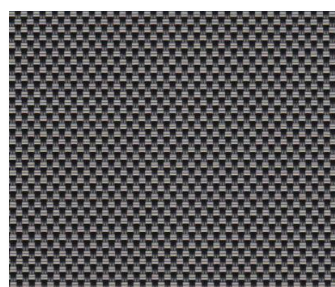
U61 ECO/ GREYSTONE



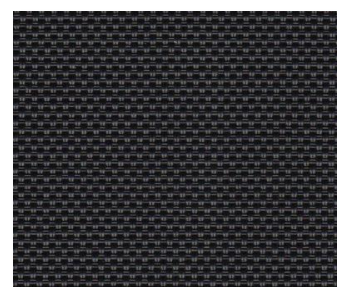
U62 ECO/ GRANITE



U63 ECO/ PEWTER



U64 ECO/ ASH



U65 ECO/ EBONY



U66 ECO/ TOBACCO

### SPECIFICATION

**WIDTHS** 63", 98" and 126"

**ROLL LENGTH** 30 Linear Yards

**FABRIC WEIGHT** 21.30 oz/yd<sup>2</sup>
**FABRIC THICKNESS** 0.033 in.

**OPENNESS** ~1%

**UV BLOCKAGE** ~99%

**COMPOSITION** 25% Polyester, 75% Vinyl on Polyester (Over 50% of compound components are derived from crop-based feed stocks and minerals. Over 2/3 of total compound is derived from non-fossil fuel-based materials.)

**WARRANTY** 5-Years Interior, 10- Years Exterior

**BACTERIAL AND  
RESISTANCE  
ACOUSTICAL  
PERFORMANCE  
ENVIRONMENTAL  
BENEFITS**
**FIRE CLASSIFICATION**

ASTM E 2180, ASTM G21, ASTM G22, AATCC30  
Part 3, ASTM

NRC 0.20 / SAA 0.19

Certified to GREENGUARD and GREENGUARD  
Gold

Ca U.S. Title 19 (small scale), NFPA 701 TM#1 (small  
scale), NFPA 101 (Class A Rating), IBC Section 803.1.1  
(Class A Rating), BS 5867 Part 2 Type B Performance,  
NFPA 701 TM#2 (large scale), CAN/ULC-S 109 (large  
and small scale), CAN/CGSB2-4.162-M80


### Care & Handling

Remove dust with vacuum cleaner or compressed air. Do not scrub. Do not use solvents or any abrasive substance which might damage the coating of the fabric. Clean with a sponge or a soft brush dipped in soapy water using mild detergent. Rinse with clean water. Leave the blind down until completely dry. You can also very gently rub the fabric with a clean white pencil eraser to remove small stains.