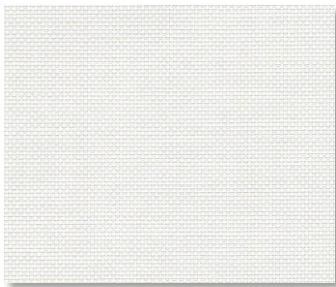
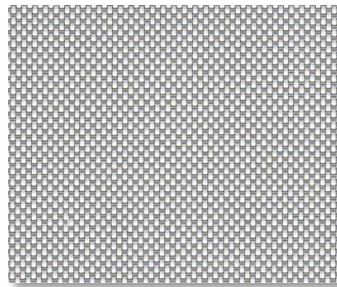


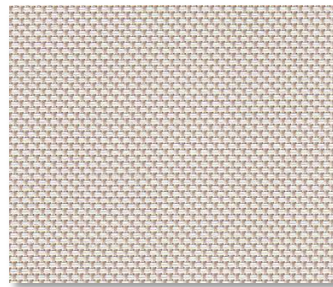
## SHEERWEAVE | 4500 5%



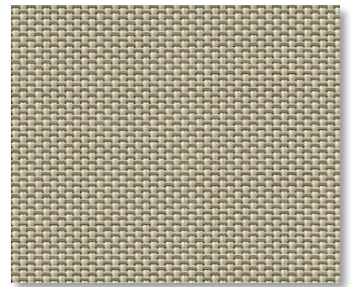
P06 CHALK



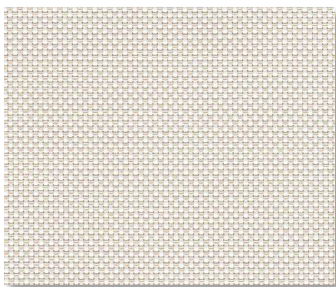
P10 GRANITE



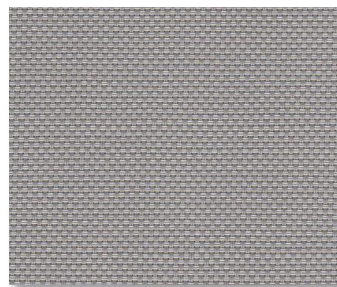
Q59 ECRU



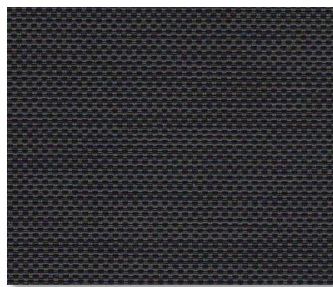
Q60 GOLDEN SAND



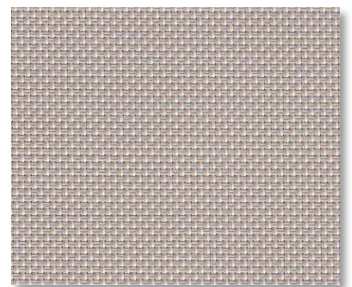
U32 LINEN



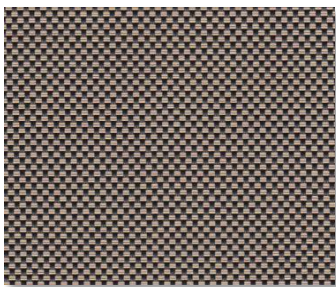
V07 PEWTER



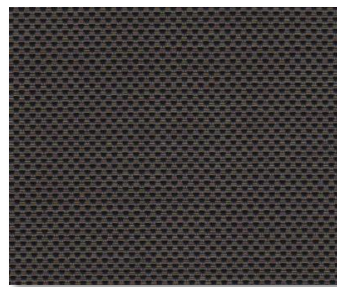
V10 EBONY



V44 SANDSTONE



V95 CAPPUCCINO



V96 DARK BRONZE

### SPECIFICATION

**WIDTHS** 63", 98" and 126"

**ROLL LENGTH** 30 Linear Yards

**FABRIC WEIGHT** 14.40 oz/yd<sup>2</sup>

**FABRIC THICKNESS** 0.024 in.

**OPENNESS** ~5%

**UV BLOCKAGE** ~95%

**COMPOSITION** 22% Polyester, 78% Vinyl on Polyester

**WARRANTY** 5-Years Interior, 10- Years Exterior

#### BACTERIAL AND RESISTANCE

**ACOUSTICAL PERFORMANCE ENVIRONMENTAL BENEFITS**

#### FIRE CLASSIFICATION

ASTM E 2180, ASTM G21, ASTM G22, AATCC30

NRC 0.20 / SAA 0.23

Certified to GREENGUARD and GREENGUARD Gold

California U.S. Title 19 (small scale), NFPA 701 TM#1 (small scale), NFPA 101 (Class A Rating), IBC Section 803.1.1 (Class A Rating), BS 5867 Part 2 Type B Performance, NFPA 701 TM#2 (large scale), CAN/ULC-S 109 (large and small scale)



#### Care & Handling

Remove dust with vacuum cleaner or compressed air. Do not scrub. Do not use solvents or any abrasive substance which might damage the coating of the fabric. Clean with a sponge or a soft brush dipped in soapy water using mild detergent. Rinse with clean water. Leave the blind down until completely dry. You can also very gently rub the fabric with a clean white pencil eraser to remove small stains.