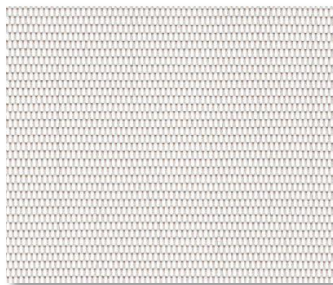


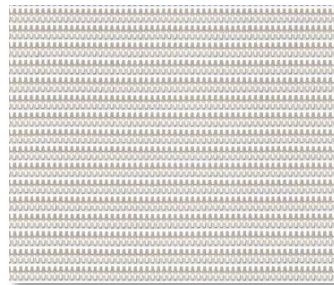
## SHEERWEAVE | 4800 1%



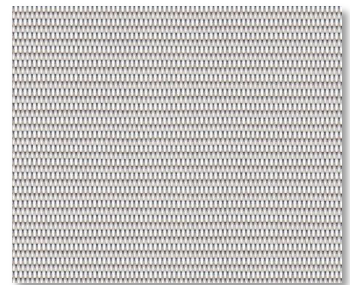
P06 CHALK



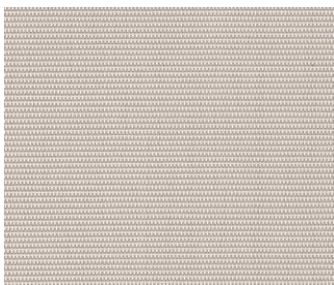
P75 PEARL



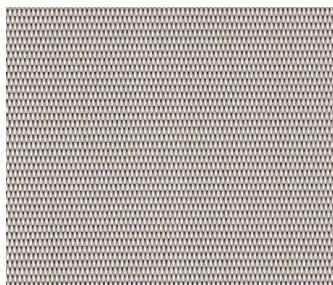
P07 ALABASTER



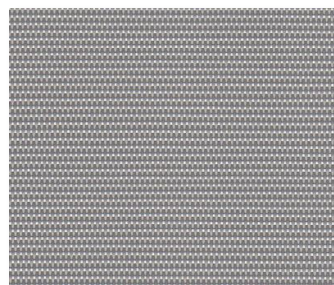
V16 GREY



Q97 SAND



Q99 TAUPE



V60 CLAY



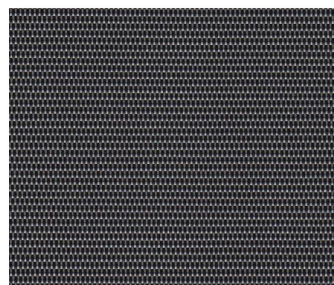
V59 FLEECE



Q98 MOCHA



V61 MINK



V62 FLINT



V10 EBONY

### SPECIFICATION

**WIDTHS** 63", 98" AND 126"

**ROLL LENGTH** 30 Linear Yards

**FABRIC WEIGHT** 18.50 oz/yd<sup>2</sup>
**FABRIC THICKNESS** 0.036 in.

**OPENNESS** ~1%

**UV BLOCKAGE** ~99%

**COMPOSITION** 24% Polyester, 76% Vinyl on Polyester

**WARRANTY** 10-Years Interior, 5- Years Exterior

#### BACTERIAL AND RESISTANCE

#### ACOUSTICAL PERFORMANCE ENVIRONMENTAL BENEFITS

#### FIRE CLASSIFICATION

ASTM E 2180, ASTM G21, ASTM G22, AATCC30 Part 3, ASTM D 3273

NRC 0.30 / SAA 0.31

Certified to GREENGUARD and GREENGUARD Gold

California U.S. Title 19 (small scale), NFPA 701 TM#1 (small scale), NFPA 101 (Class A Rating), IBC Section 803.1.1 (Class A Rating), BS 5867 Part 2 Type B Performance, NFPA 701 TM#2 (large scale), CAN/ ULC-S 109 (large and small scale), CAN/CGSB2-4.162-M80



### Care & Handling

Remove dust with vacuum cleaner or compressed air. Do not scrub. Do not use solvents or any abrasive substance which might damage the coating of the fabric. Clean with a sponge or a soft brush dipped in soapy water using mild detergent. Rinse with clean water. Leave the blind down until completely dry. You can also very gently rub the fabric with a clean white pencil eraser to remove small stains.