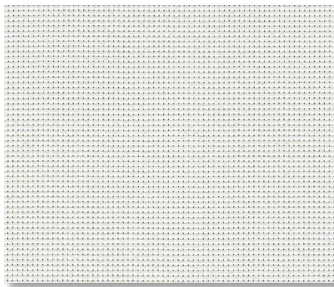
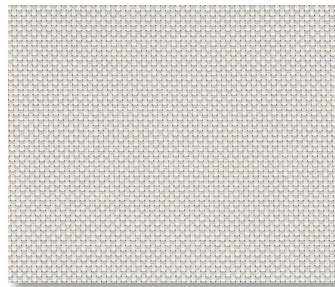


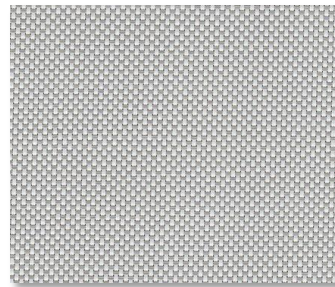
SHEERWEAVE | 7100 BLACKOUT



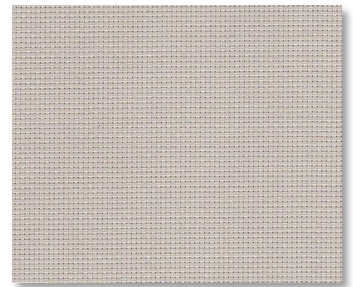
P02 WHITE



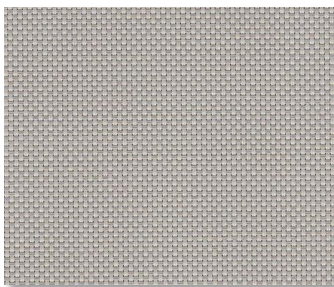
P13 OYSTER/BEIGE



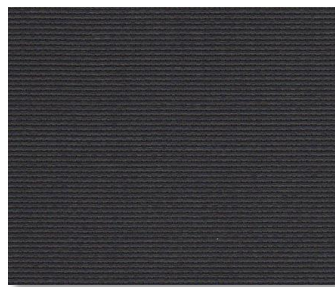
P05 WHITE/ PLATINUM



Q05 BONE



Q06 BONE/ PLATINUM



V21 CHARCOAL

SPECIFICATION

WIDTHS 63" AND 96"

ROLL LENGTH 30 Linear Yards

FABRIC WEIGHT 21.60 oz/yd²
FABRIC THICKNESS 0.025 in.

OPENNESS Opaque

COMPOSITION 37% Fiberglass, 63% Vinyl on Fiberglass

WARRANTY 10- Years Interior

**BACTERIAL AND
RESISTANCE**
**ACOUSTICAL
PERFORMANCE
ENVIRONMENTAL
BENEFITS**
FIRE CLASSIFICATION

ASTM G21, AATCC 174-1998 Part II and III

NRC 0.05 / SAA 0.03

Certified to GREENGUARD

NFPA 701 TM#1 (small scale), NFPA 701 TM#2 (large scale), BS 5867 Part 2 Type B Performance, CAN/ULC-S 109 (large and small scale), NFPA 101 (Class B Rating), IBC Section 803.1.1 (Class B Rating)



Care & Handling

Remove dust with vacuum cleaner or compressed air. Do not scrub. Do not use solvents or any abrasive substance which might damage the coating of the fabric. Clean with a sponge or a soft brush dipped in soapy water using mild detergent. Rinse with clean water. Leave the blind down until completely dry. You can also very gently rub the fabric with a clean white pencil eraser to remove small stains.